



Minnesota Wind Permit Noise Compliance

Minn. Rule 7030.0040 Noise Standards

Subp. 1: Scope.

These standards describe the limiting levels of sound established on the basis of present knowledge for the preservation of public health and welfare. These standards are consistent with speech, sleep, annoyance, and hearing conservation requirements for receivers within areas grouped according to land activities by the noise area classification (NAC) system established in part [7030.0050](#). However, these standards do not, by themselves, identify the limiting levels of impulsive noise needed for the preservation of public health and welfare. Noise standards in subpart 2 apply to all sources.

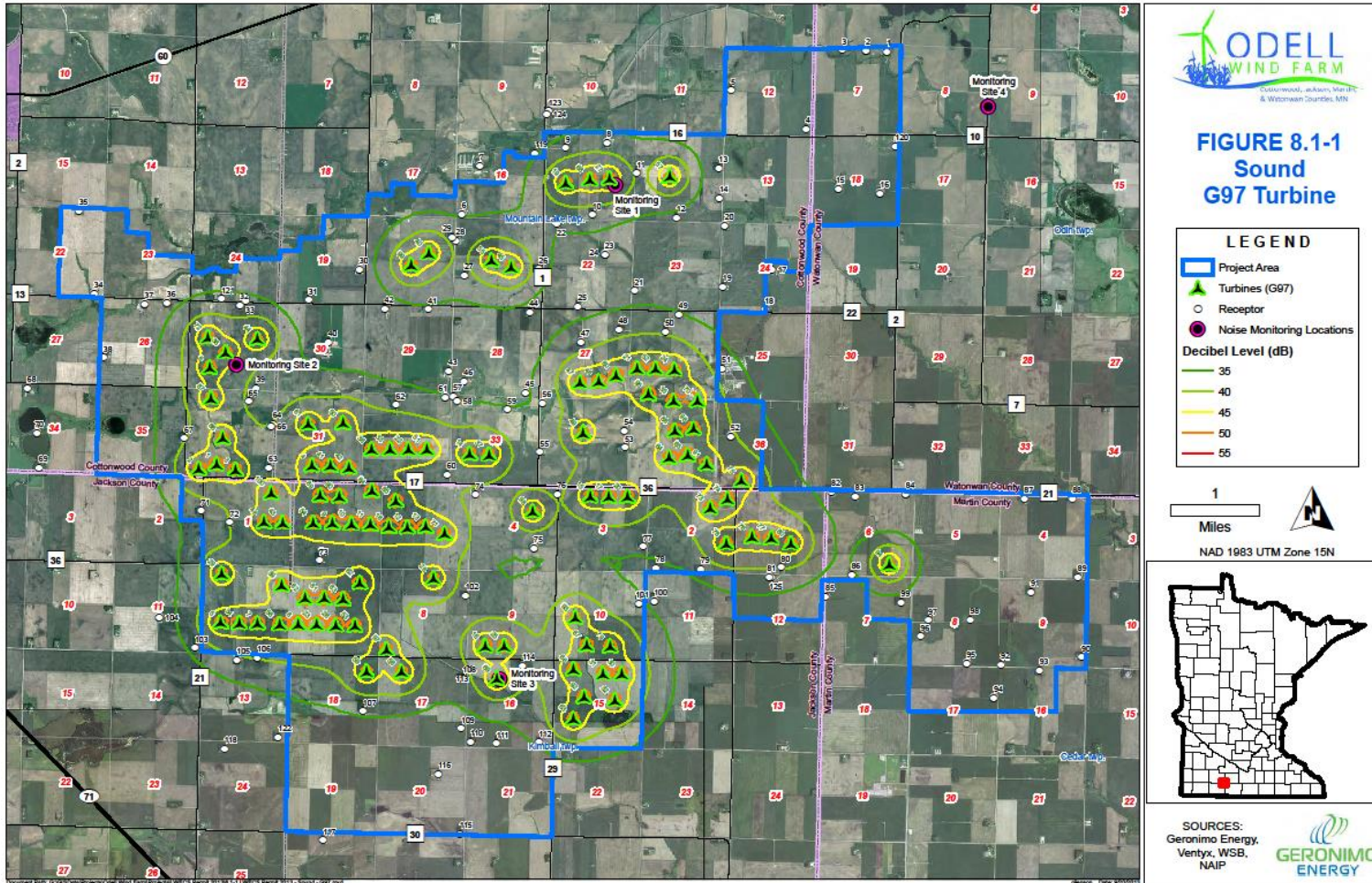
Subp.2: Noise Standards (dBA)

	Daytime		Nighttime	
	L10	L50	L10	L50
1	65	60	55	50
2	70	65	70	65
3	80	75	80	75

Applicable Standard:
MPCA Residential Nighttime Audible Noise (50 dBA)



**FIGURE 8.1-1
Sound
G97 Turbine**



Minimum Turbine Setback From Residences at Least 1,000

Resource Category	General Permit Setback	Minimum Setback
Wind Access Buffer	3x5 Rotor Diameter (RD) from the developer's wind or land control area; 3 RD non-prevailing, 5 RD prevailing wind direction.	3RD = 750 feet 5RD = 1,250 feet
Internal Turbine Spacing	Same, but 20% of internal spacing may be closer	Same
Noise	MN Rule 7030, Night time noise standard	New turbines: > 1,000 ft
Homes	(500) 1,000 feet	1000 ft
Public Roads and Recreation Trails	Turbine towers no closer than 250 feet from the edge of public road, trail setbacks determined on a case by case basis	250 feet
Met Towers	250 feet from edge of public road ROW and area of developer control, trail setback determined on a case by case basis	250 feet
Aviation (public and private)	No turbines, towers or associated facilities shall be located so as to create an obstruction to navigable airspace of airports	Minnesota Department of Transportation and Federal Aviation Administration to determine

CONTROLLING SETBACK



Wind Permit Requires Three Steps for Noise:
Each With Guidelines or Permit Requirements

Thank You

John Wachtler

Department of Commerce

John.Wachtler@state.mn.us

651-539-1837

Tricia DeBleeckere

Public Utilities Commission

Tricia.DeBleeckere@state.mn.us

651-201-2254